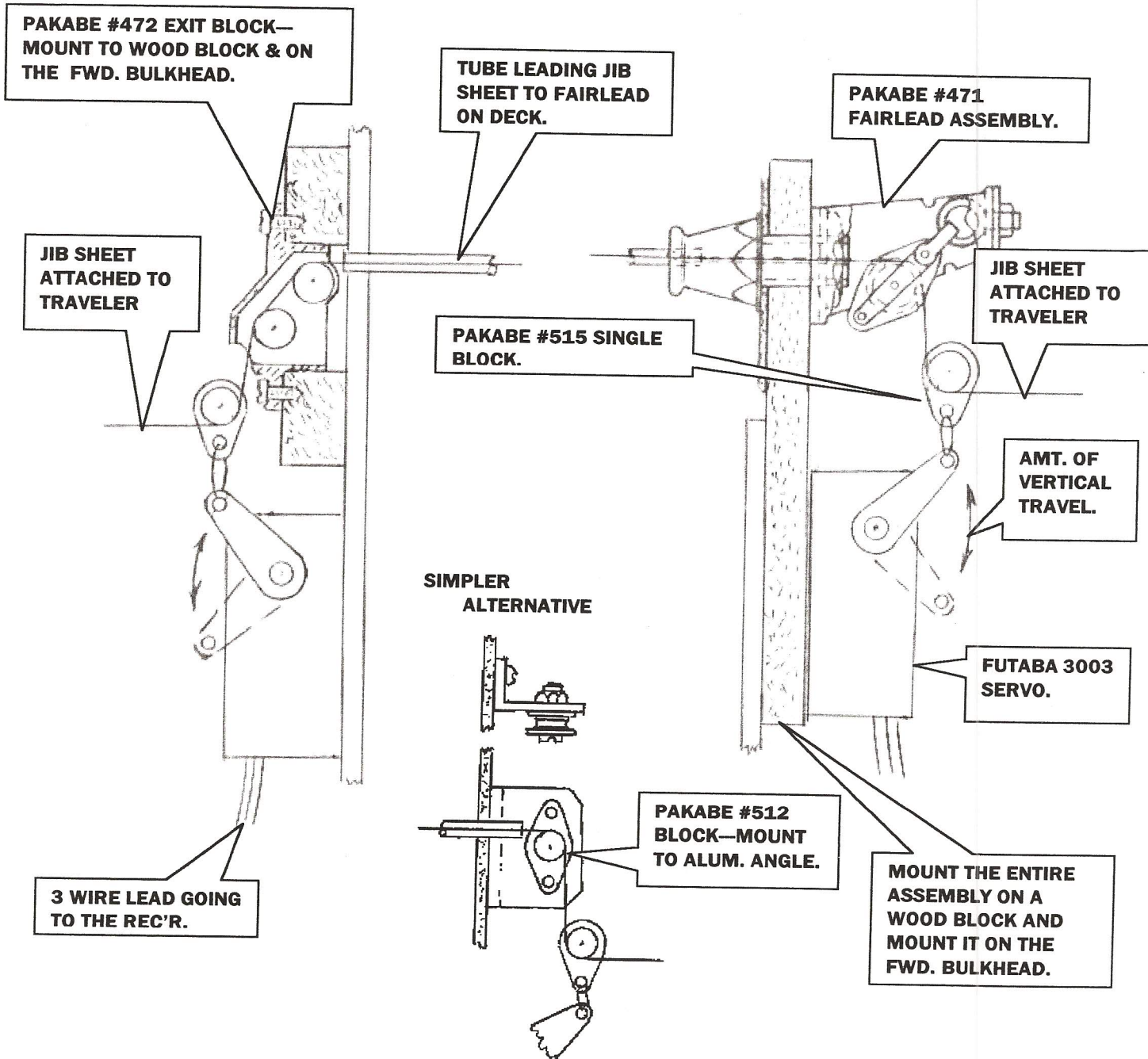


STAR CONSTRUCTION — JIB TWEAKERS



TYPICALLY, THE MAIN AND THE JIB ARE BOTH CONTROLLED BY ONE CHANNEL ON THE RADIO. THE JIB TWEAKER ALLOWS THE SKIPPER TO MAKE MINOR CHANGES IN THE JIB SETTING WITHOUT AFFECTING THE MAIN SETTING. OBVIOUSLY, THIS REQUIRES 2 RADIO CHANNELS FOR THE SAIL CONTROL.

(DRAWINGS ARE SHOWN APPROX. ACTUAL SIZE)